

# Earley Environmental Group

## Earley Green Corridor Network

### Making Space for Nature in Earley

The Earley Environmental Group (EEG) has developed a Green Corridor Network for Earley. The network combines Earley's green spaces and green links to create a series of linear corridors that can be protected and enhanced as a comprehensive body of ecological sites and natural habitats. Within each corridor, each green space and link has a role to play in providing local wildlife with natural habitats and routes. Many of them also provide Earley's residents with valued leisure space. The green corridors will provide a basis for helping to ensure that "green infrastructure" (the green space and links) is preserved for the benefit of wildlife and protected from the adverse impacts of development.

The green corridor concept is based on the findings of a report published in 2010; **Making Space for Nature: A Review of England's Wildlife Sites and Ecological Network**; otherwise known as the "Lawton Report", named after Professor Sir John Lawton, who chaired the group that produced the report. The report looked at ways of better connecting England's wildlife to strengthen ecological networks and encourage nature to thrive against the pressures of climate change and increased development.

The Lawton Report stated that ecological networks generally have five components; Core Areas, Corridors and Stepping Stones, Restoration Areas, Buffer Zones, and Sustainable Use areas. The EEG has adapted this concept in developing the green corridor network for Earley; linking its established core green spaces with the Local Green Spaces recently proposed both by the EEG and Earley Town Council, and the EEG's proposal for a Lower Earley Local Nature Reserve. 'Stepping-stones'; comprising smaller parks and green spaces; as well as green pathways and natural green routes, have then been identified as green links both within and neighbouring Earley.

#### Defining the Network

Using the Lawton Report's five components as a starting point, and adjusting for Earley's urban environment, the Earley Green Corridor Network has been defined using the following components:

- i) **Core Green Space (Natural)**: areas of high nature conservation value which form the heart of the network. They contain habitats that are important to Earley because of the wildlife they support or the ecosystem services they provide.
- ii) **Core Green Space (Horticultural/Cultivated)**: areas such as parks, mown open grassland and allotments that provide ecosystems for wildlife as well as leisure facilities for local residents.
- iii) **Green Links**: linear green connectors, such as pathways and lines of trees and shrubs, that link core green spaces and stepping stones, thereby improving the functional connectivity between core areas and enabling species to move between them to feed, disperse, migrate or reproduce.

(iv) **'Stepping-Stones'**: small parks and green spaces that provide intermediate habitats for wildlife to move between core areas, enabling them to feed, disperse, migrate or reproduce.

(v) **Green Transport Corridors**: green connectors that follow main road and rail routes through Earley, enabling species to move between them to feed, disperse, migrate or reproduce.

(vi) **Agricultural Buffer Zones**: areas that surround Earley, forming a buffer between Earley and neighbouring largescale developments.

Two types of core area have been identified to enable horticultural and cultivated parks, mown grass areas and allotments to be defined separately from natural woodlands, nature reserves and general countryside. Green links, stepping stones and the agricultural buffer zone have been defined on a similar basis to the Lawton Report. Green Transport Corridors have been added to take account of their role in providing habitats and routes for wildlife within and through Earley.

### Corridor Development

**Figure 1** shows the core green spaces, stepping stones and green links that have been identified when developing the area's green corridors. Green Corridors were created by linking the green spaces that, when brought together, provide natural routes and habitats for wildlife. Green links connecting the corridors and linking to nearby green spaces were also identified. It was recognised that there are many other natural links in the local area, such as those that run along the backs of gardens and local streams that could be added to the network. Where possible, to ensure continuity with neighbouring areas, each of the corridors has been connected with key green spaces beyond Earley, such as Bulmershe Fields, Dinton Pastures, Palmer Park and green areas in Whitley. Transport routes that follow the two rail routes running through Earley (the Great Western and South Western railways) and the M4 motorway running along its southern edge were identified as Transport Green Corridors. The resulting Earley Green Corridor Network includes four main green corridors and three transport corridors, as well as a group of connecting Green Links, as listed below.

#### Green Corridors

Earley's four Green Corridors are:

- **The Thames Green Corridor** + Kennet Green Link
- **The Whiteknights to Bulmershe Green Corridor** + Palmer Park, South Lake and The Cowsey Green Links
- **Maiden Erlegh Green Corridor** + Chalfont Park Green Link
- **Loddon and Lower Earley Green Corridor** + South Loddon Green Link.

#### Green Transport Corridors

Earley's three Green Transport Corridors are:

- **The Great Western Railway Transport Corridor**
- **The South Western Rail/A3290 Transport Corridor**
- **The M4 Transport Corridor.**

## Network Development

The Green Corridor Network was initially developed by linking the four Green Corridors and three Transport Corridors in schematic form, as shown in **Figure 2**. Each corridor was then expanded to show its broad 'footprint' and connecting links in relation to the local environment, as shown in **Figure 3**. Each of the Green Corridors is shown separately in **Figures 4 to 7**. **Appendix A** lists the key green spaces and green links that form each corridor.

## Using the Green Corridor Network

The overall purpose of the Earley Green Corridor Network is to help protect and enhance Earley's natural environment and wildlife. The EEG will use the network to support schemes and programmes that benefit green infrastructure, ecological sites and conditions for wildlife. It will also be used in assessing the network-wide impact of development proposals on the natural environment and wildlife. It is intended that the Earley Green Corridor Network be used to:

- form the basis for Earley Town Council's Green Infrastructure Plan;
- increase awareness and appreciation of Earley's green infrastructure;
- encourage a more wildlife-friendly approach to the management of Earley's green infrastructure;
- be a reference document for planning applications submitted to Wokingham Borough Council;
- be a reference document for planning applications submitted for assessment to Earley Town Council from Wokingham Borough Council; and
- encourage the designation of linear nature reserves across Earley, including the Lower Earley Local Nature Reserve.

## Adoption of the Network

The principle of the Earley Green Corridor Network has already been adopted by Earley Town Council within its **Interim Earley Green Infrastructure Action Plan**, updated in April 2022, which states that "A Green Corridor Map being prepared by the Earley Environmental Group will be the hub of all Green Infrastructure policies". This is a major step forward in protecting Earley's green environment. Wokingham Borough Council's support for the network will also be sought, specifically for its adoption as a tool for assessing how individual planning developments will impact on Earley's environmental network. Neighbouring local authorities, such as Wokingham and Reading Borough Councils could also take forward the concept to form an extended network that would protect green corridors on a wider scale. **Figure 8** shows the wider corridors that could potentially form the basis of such an extended network.

Produced by Bob Collis and Grahame Hawker

## **Appendix A**

### **Green Corridor Formation – Key Green Spaces and Links**

#### **The Thames Green Corridor + Kennet Green Link**

##### Green Spaces

- Sonning Playing Fields
- Holme Park
- Big Gogs/Little Gogs/ Scotchman’s Knob Area
- Thames Valley Park Nature Reserve
- Thames Valley Park Cultivated Grass Areas
- Caversham Lakes
- Kings Meadow
- Christchurch Meadow

##### Green Links

- Thames River and Path
- Kennet River Path

#### **The Whiteknights to Bulmershe Green Corridor + Palmer Park and South Lake Green Links**

##### Green Spaces

- Whiteknights Campus/The Wilderness/Harris Gardens
- Palmer Park
- Alfred Sutton Playing Fields
- Leighton Park School Playing Fields and Woodland
- Sol Joel Playing Field
- East Reading (Earley) Allotments
- Highwood
- Bulmershe Playing Fields/Bulmershe Park/Bulmershe Allotments
- South Lake

##### Green Links

- Whiteknights Road Trees and Verge

#### **Maiden Erlegh Green Corridor + Chalfont Park Green Link**

##### Green Spaces

- Hillside School Playing Field
- Chalfont Park
- Whiteknights School Playing Field
- Redhatch Copse

- Maiden Erlegh Local Nature Reserve
- Laurel Park Playing Fields

#### Green Links

- Pedestrian Route between Halls Lane and Collins Redhatch Drive via Durand Road and Collins Drive
- Green Triangle Area off Beech Lane
- Pedestrian Route between Moor Copse and Riverside Park via Gipsy Lane and Toseland Way

#### **Loddon and Lower Earley Green Corridor + South Loddon Green Link.**

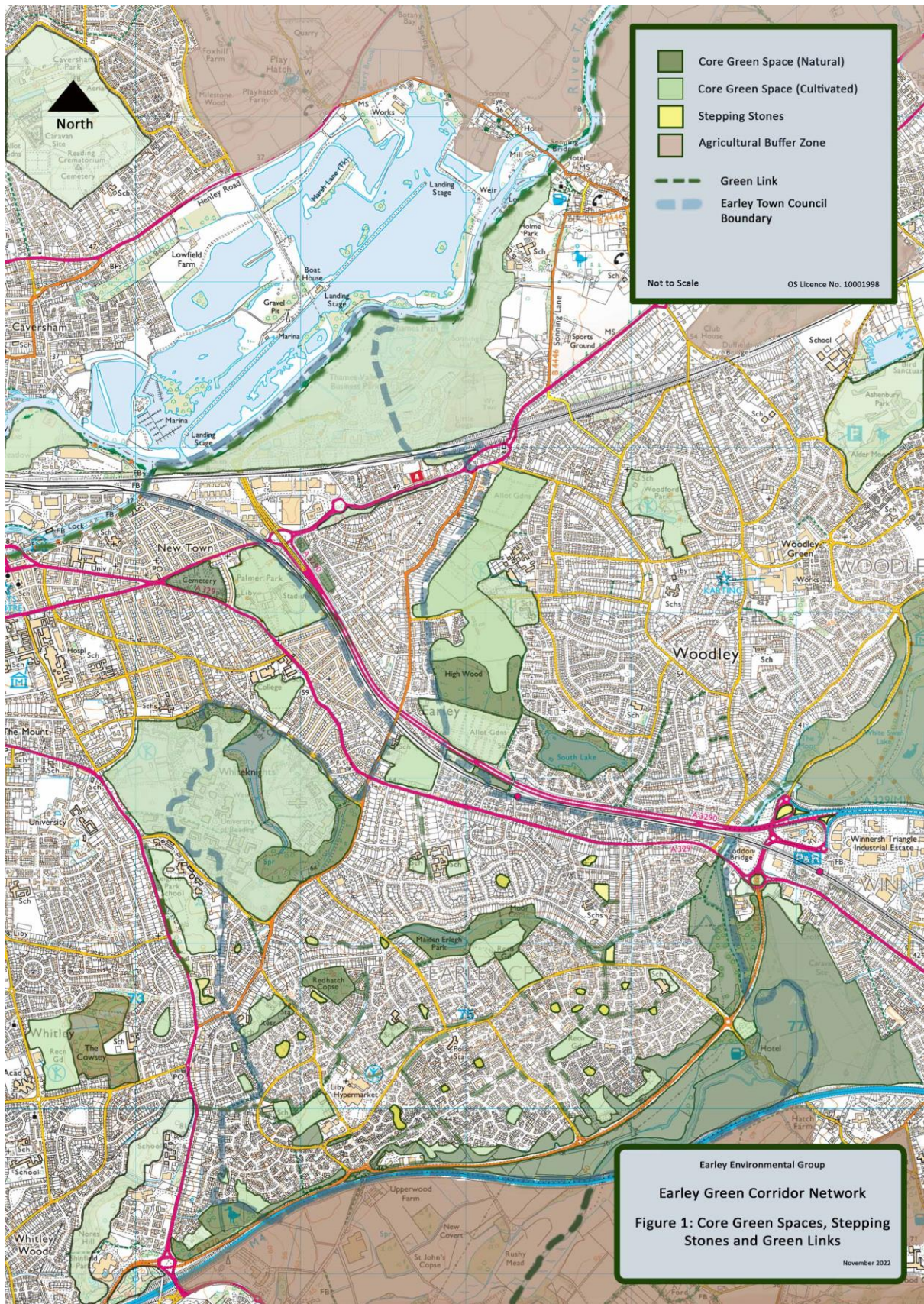
#### Green Spaces

- Nores Hill/Shinfield Park
- The Grove south of Whitley Wood Lane
- Pearman's Copse Local Nature Reserve and adjacent green spaces
- Woodland and Green Space north of Lower Earley Way (West) between Pearman's Copse and Danehill
- Woodland at Danehill
- Woodland and Green Space north of Lower Earley Way between Danehill and Swallows Meadow
- Swallows Meadow
- Green Areas and Woodland between Meldreth Way and Rushey Way
- Riverside Park/Lower Earley Meadows (Rushey Way to Wokingham Road)
- Hatch Farm Green Space
- Meadow land south of the River Loddon at Sindlesham
- Dinton Pastures

#### Green Links

- Pedestrian Route between Riverside Park and Dinton Pastures
- River Loddon south of the M4 motorway

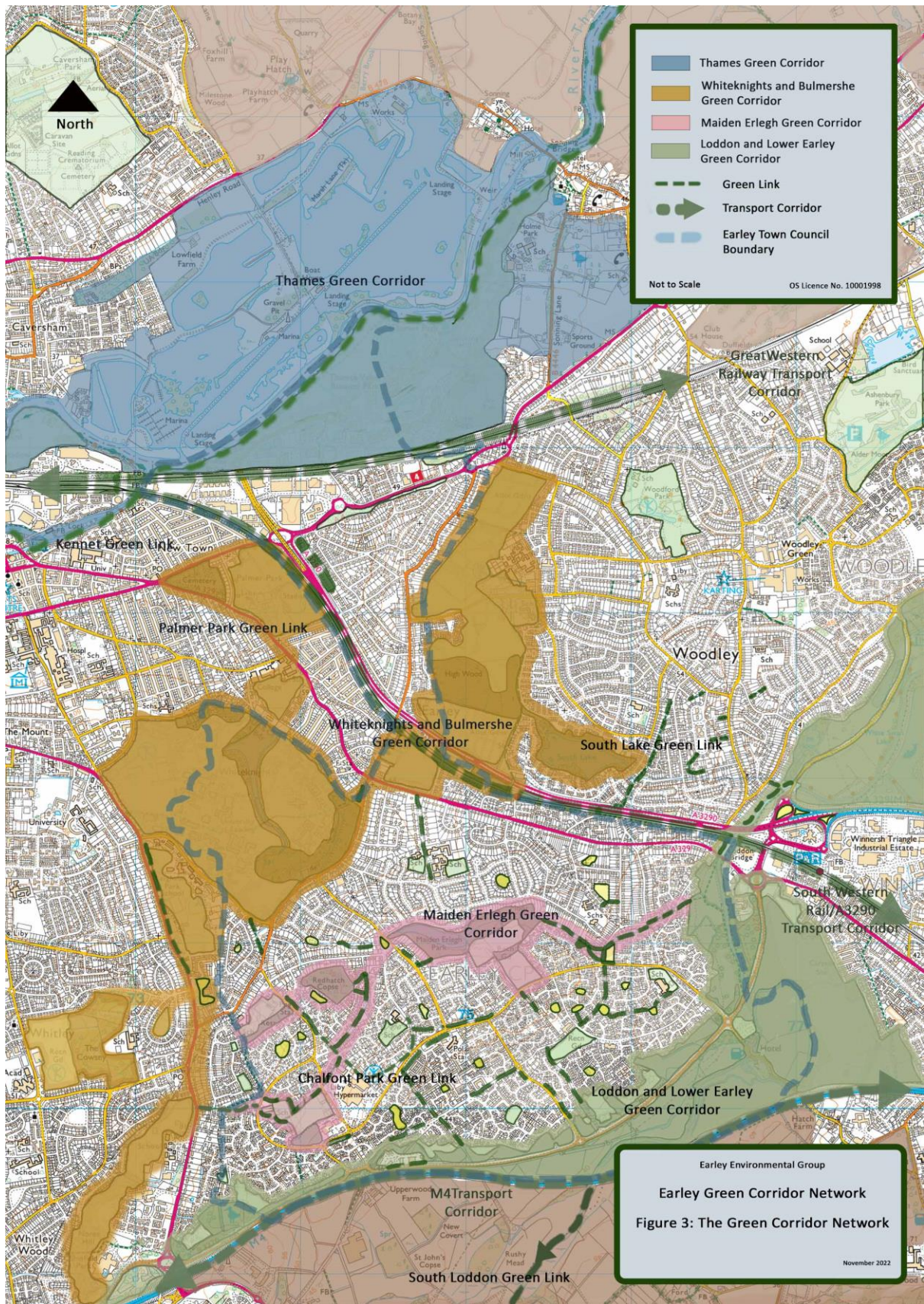




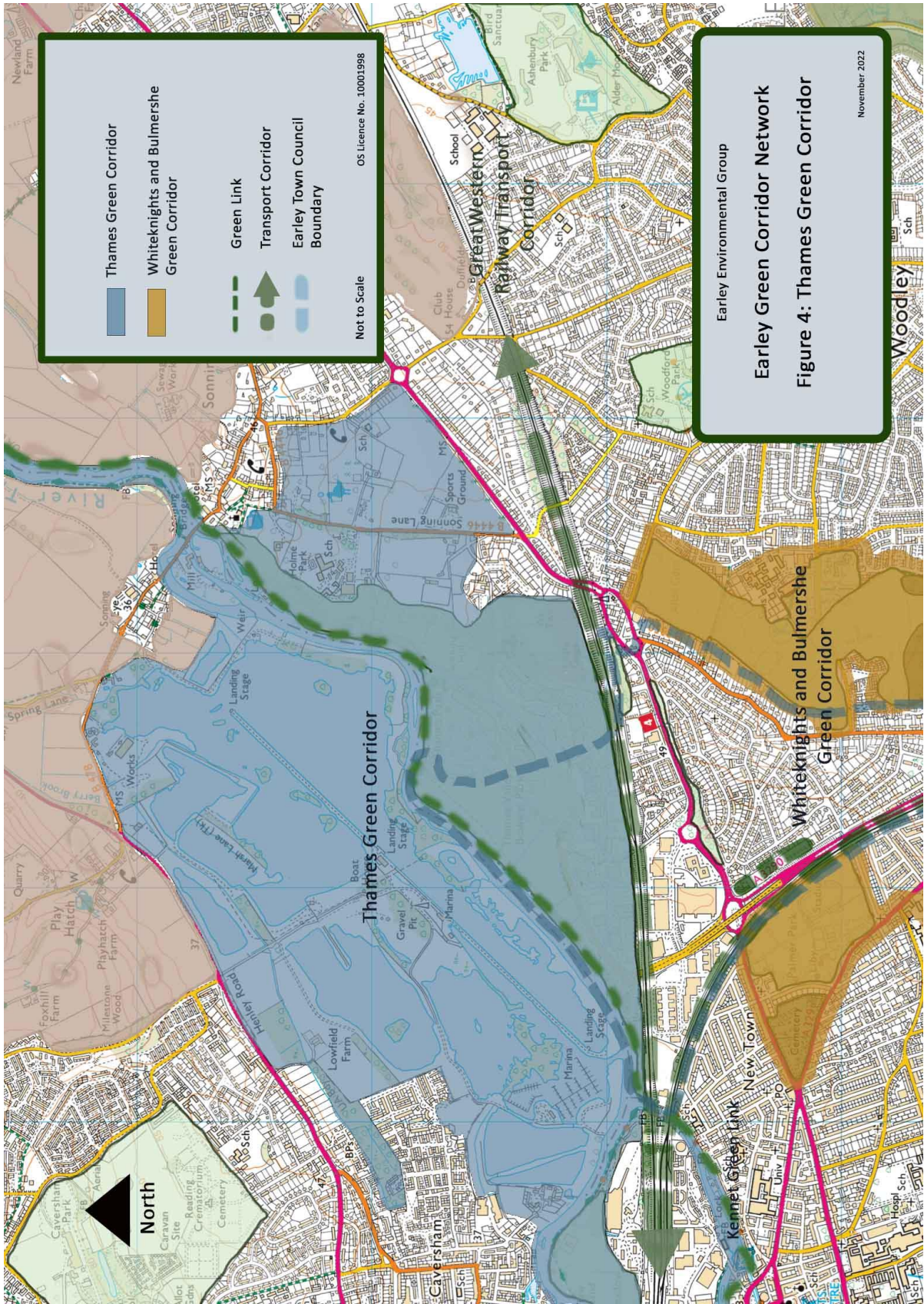




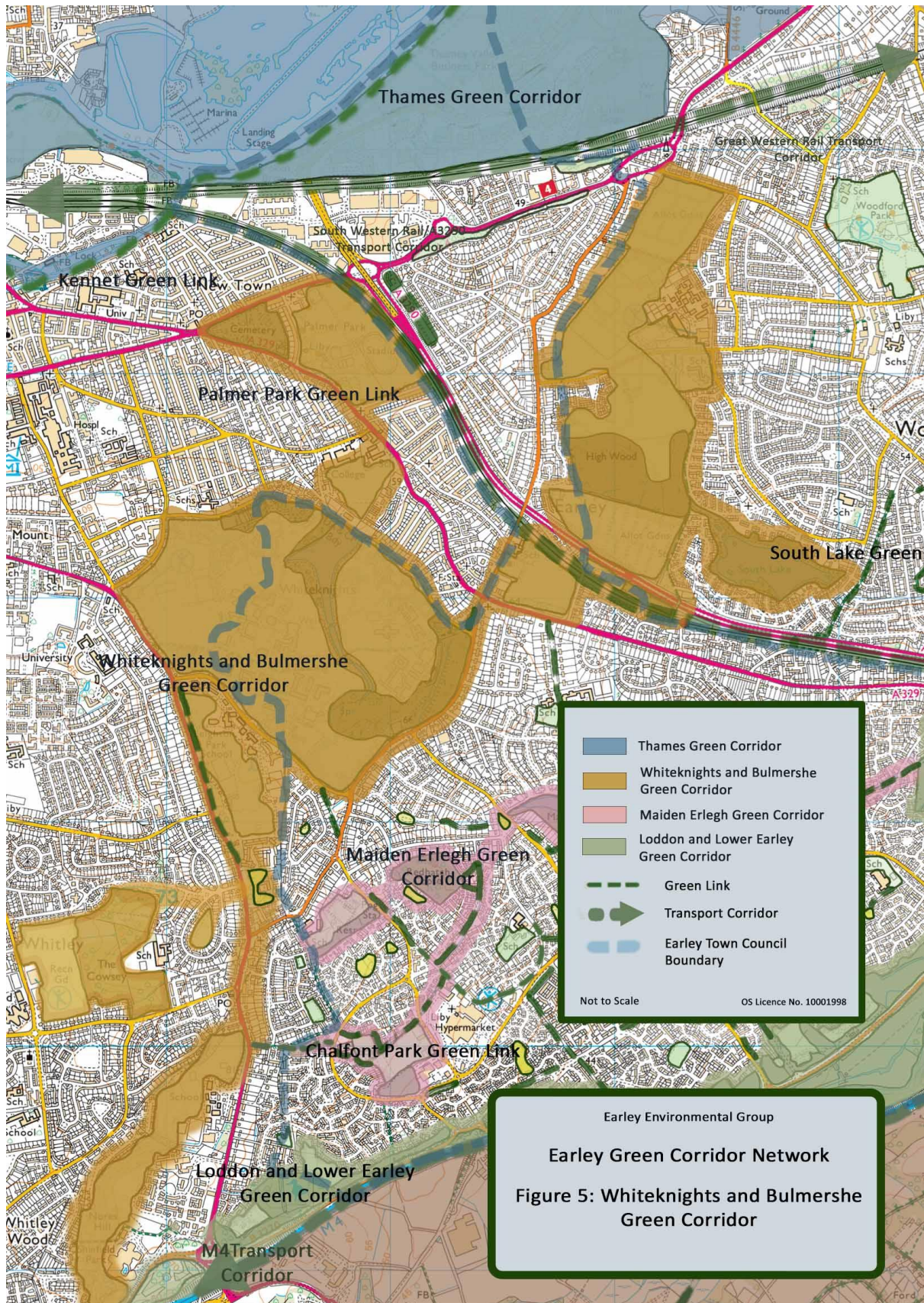




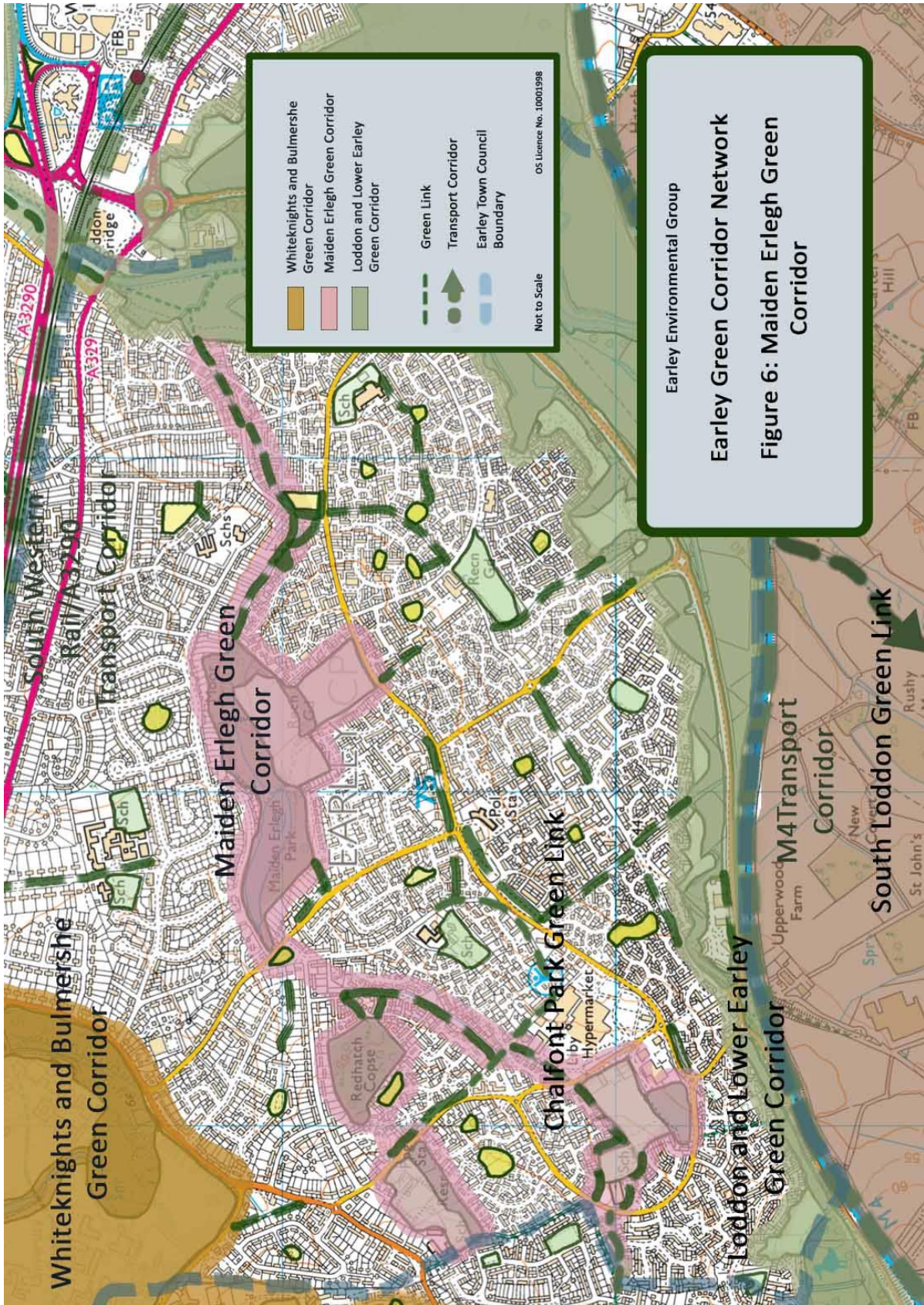




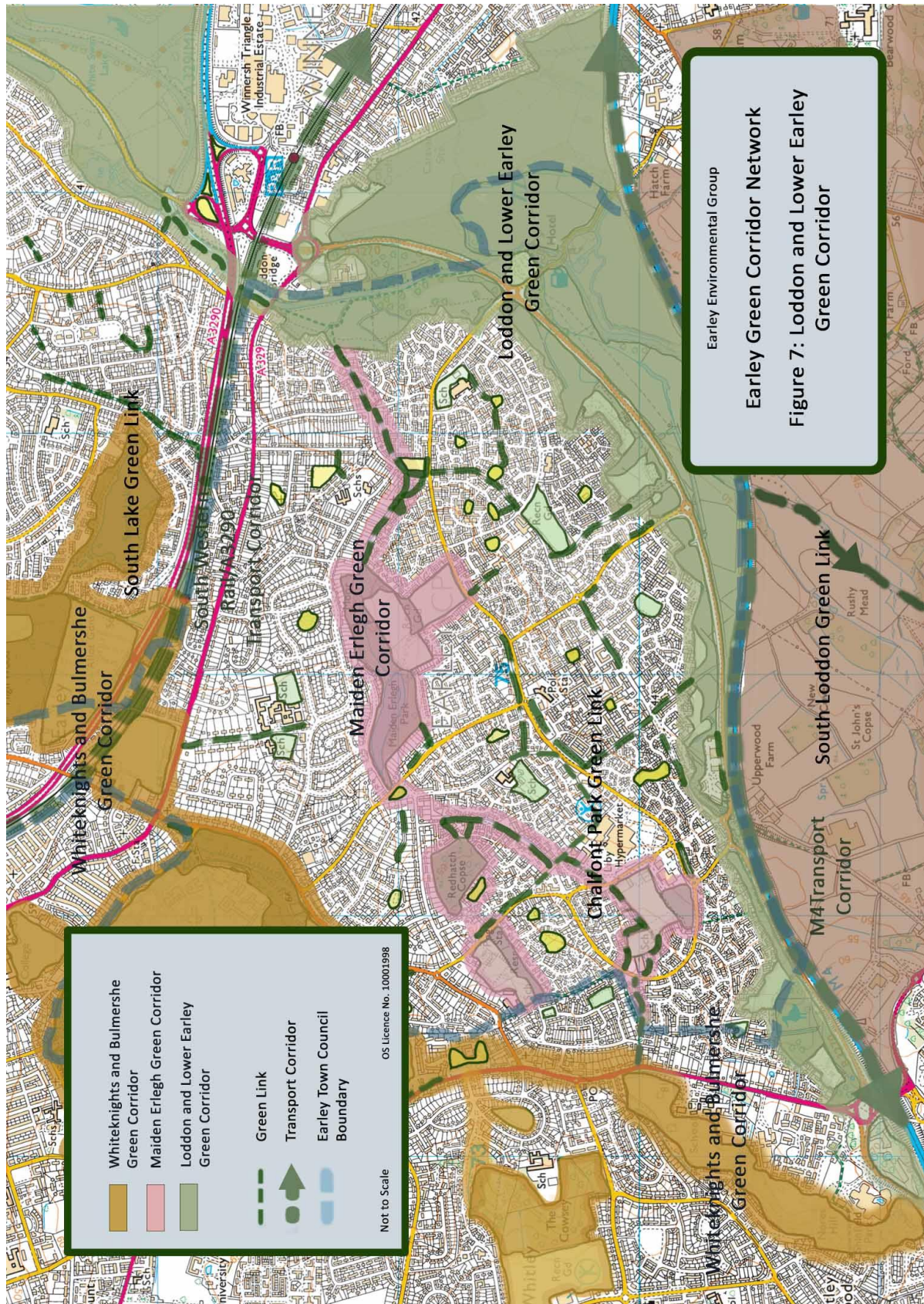




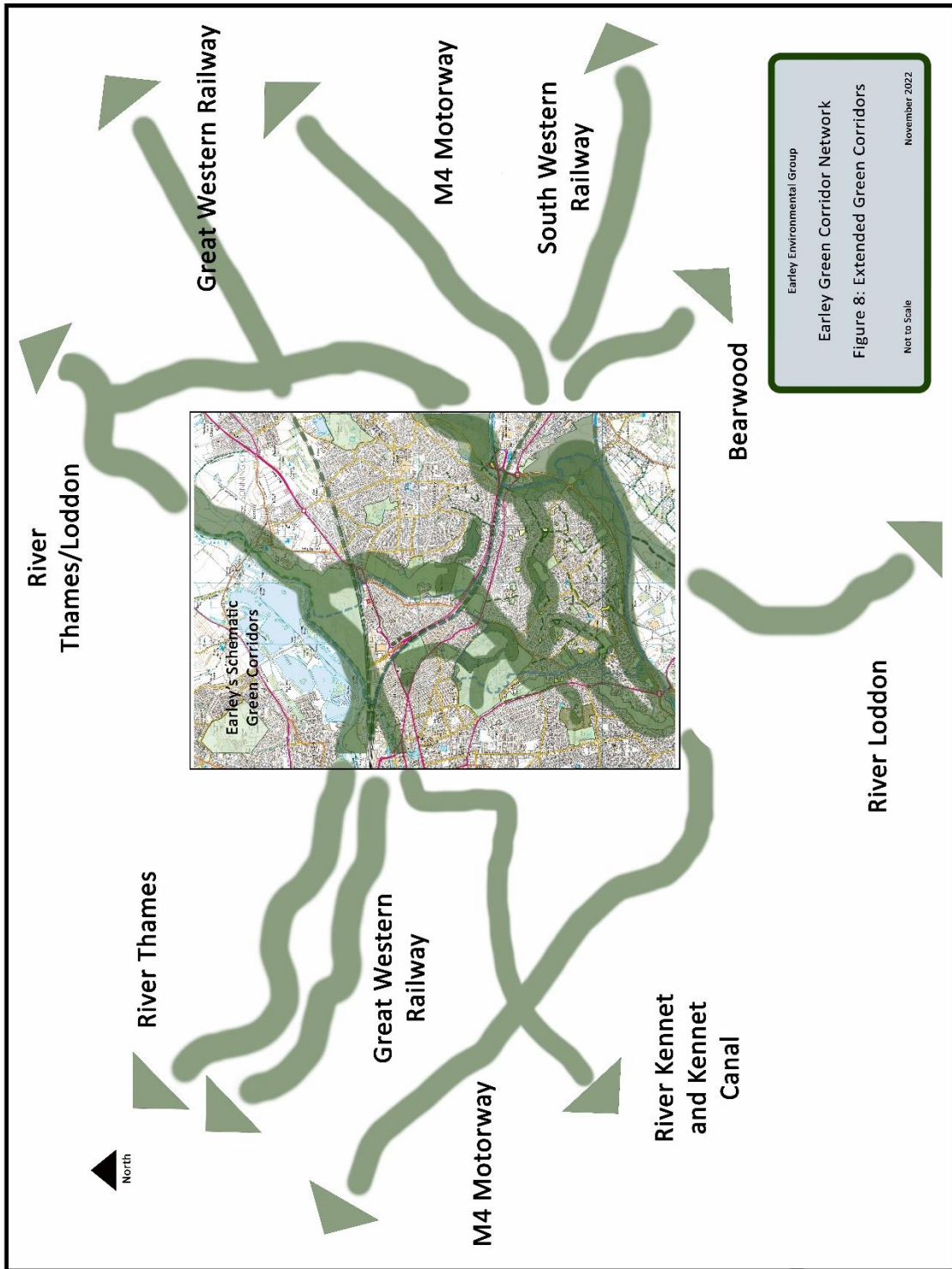












To: Earley Town Council

From: Mayor of Earley

Subject: Mayoral Visits

Date: 30<sup>th</sup> January 2023

.....  
Since November, I have represented Earley Town council at the following events: -

- Lower Earley Library 35th anniversary.  
Lower Earley Library is an essential facility for our local community. The library offers necessary services that are used and appreciated by all ages. On the day, the staff were accommodating and engaged enthusiastically.

Paul Windley gave an outstanding presentation about Earley from the early 1900s to the present day. Paul had spent quite a lot of time collecting all the information and old photos of Earley.

- Meet the Artist at St. Nicolas Church.  
The photos taken of the winter scene were not only professional but inspiring. I was taken aback by a number of the photos, but two in particular. It's impressive that Bob Collis made an effort to put this exhibition together. It was also good to meet some of Earley's artists.

It was also good to see that several of our Councillors were at the event in their private capacity – supporting our community.

Cllr. Tahir Maher  
Mayor of Earley



Report for Full Council – Re – Anne Bassett’s attendance at the Kenton Road Day Centre committee meeting 17<sup>th</sup> January 2023

**Issues on Going - The Drive**

The committee reported that whilst the issues with the subsidence on the drive was still on going, the insurance company had finally agreed that they would pay for the repair, and it was hoped that the repair could soon be started.

**Extra Activities** The committee had organised, a McMillan coffee morning, a Fish and chip supper, the Christmas Fair, a Carol and mince pie evening as well as a New Year’s Eve Bring and Share supper.

**Finances** - The Treasurer reported that the finances were in good shape and that money had been invested in a bond which should bring in a healthy return. Events had raised money, particularly the Xmas fair. Letters to local businesses requesting donations for prizes had not been successful this year, but despite this the Christmas fair raised £747.60.

**The Foot clinic** continues to be well supported. It was agreed that all notices regarding the foot clinic made it clear that this was run by a Foot technician and that they did not offer chiropody.

**Day centre Purchases-** New curtains, a microwave and an urn have all been purchased.

**Future projects and maintenance**

Outside Notice board – Tim Chambers reported that he was committed to begin the project in the Spring.

New Film Projector – The committee were taking advice from the Crescent on this purchase and hoped to see the one used there which cost around £300.

New Toilet – the committee is looking to have a disabled toilet and replace the basin with lever taps. They are applying for a grant from the Berkshire Nurses and Relief in Sickness Trust for this, asking for £1000.

Fire protection /Gas service and PAT testing of equipment – the committee is organising this .

**Future Social events**

**Feb- 14<sup>th</sup>** a Soup and Pud lunch

**March** - Fish and Chips

**May** – Afternoon tea to celebrate the Coronation – either 7<sup>th</sup> / 8<sup>th</sup> May – to be agreed.

Earley Town Council Meeting – 8<sup>th</sup> February 2023

## Agenda Item 10.

BUDGET AND PRECEPT 2023-24

i)

Recommendations from Budget Working Party – 18<sup>th</sup> January 2023

At a meeting of the Budget Working Party 18<sup>th</sup> January 2023, councillors requested some small amendments be made to the planned budgets of the following:

1. **Maiden Place CC – Overhaul of Heating System**
2. **Maintenance Depot – Machinery & Vehicles**
3. **General Administration – Councillor Training**
4. **Grants**
5. **Ear marked reserve – Laurel Park**
6. **Ear marked reserves – Other**

There was much discussion over the setting of next year's precept and councillors present at the meeting recommended that a 2% increase to the precept would be required.

The impact of a 2% increase is shown in the table below:

YEAR	PRECEPT	% increase in precept	Increase in precept ££	Band D equivalent	Band D increase – per week
20/21	£978,271		-	£81.82	
21/22	£988,054	1%	£9,783	£82.60	1.5 p pw
22/23	£988,054	0%	£0	£82.51	-( 0.2 p pw)
<b>23/24</b>	<b>£1,007,815</b>	<b>2%</b>	<b>£19,761</b>	<b>£83.94</b>	<b>2.75 pence pw</b>

ii)

Recommendations from the Policy & Resources Committee – 25<sup>th</sup> January 2023

Members were provided with the revised budget 2023-24 as per the recommendations in i) above.

Members **RESOLVED** unanimously to recommend the budget 2023-24 to Council.

Members **RESOLVED** that a 2% increase in the precept would be recommended to Council, the equivalent of an increase of less than 3p per week per Band D household.

Jo Friend

Town Clerk



# EARLEY TOWN COUNCIL

## Notice of Meetings

2023/2024



Notice is hereby given of the following meetings of the Council and its Committees

	<b>Amenities &amp; Leisure</b>	<b>Planning</b>	<b>Policy &amp; Resources</b>	<b>Council</b>
	(Wednesday 7.45pm)	(Tuesday 7.30pm)	(Wednesday 7.00pm)	(Wednesday 7.30pm)
<b>2023</b>		4th April		
	31st May	2nd May		ANNUAL 17th May MTG
		6th June	7th June	21st June
	5th July	4th July	12th July	26th July
		1st August		
	13th September	5th September	27th September	
	25th October	3rd October		11th October
		7th November	8th November	22nd November
		5th December		
<b>2024</b>	17th January	9th January	24th January	
		6th February		7th February
	6th March	5th March	13th March	27th March
		9th April		

All meetings are held at the Council Offices, Radstock Lane, Earley  
Members of the public are welcome to attend

The Annual Meeting of the Town Council will be held on Wednesday , 17th May 2023

Jo Friend, Town Clerk

**RECORD OF COUNCILLOR ATTENDANCES – 2022/23**

NAME OF COUNCILLOR	COUNCIL							AMENITIES						PLANNING										POLICY & RESOURCES							
	05	06	07	10	11	02	03	05	06	09	11	1	03	05	06	07	08	09	10	11	12	01	02	03	04	06	07	10	11	01	03
A. BASSETT	✓	✓			✓			✓		✓	✓			✓			A										✓	✓	✓	✓	
G. BHANGRA		✓	✓		✓			✓		✓		✓																			
N. BROCK	✓	✓	✓	✓	✓			✓	✓	✓	✓	✓																			
D. CHOPPING			✓																										✓	✓	
J. CLARK	✓		✓		✓																					✓	✓		✓	✓	
R. COOK	✓		✓	✓	✓									✓		✓	✓		✓	✓	✓	✓									
M. EASTWELL	✓	✓	✓	✓	✓				✓	✓	✓	✓																			
J. EASTWELL	✓	✓	✓	✓	✓																					✓	✓	✓	✓	✓	
D. HARE	✓	✓	✓	B	✓																					✓	✓	✓	✓	✓	
R. HOULBROOKE	✓	✓		✓	✓																					✓	✓	✓	✓	✓	
D. IRELAND	✓	✓			✓				✓	✓	✓																				
C. JONES	✓	B	✓	✓																						✓	✓				
I. KHAYINZA	✓	✓	✓	✓	✓						A																				
G. LITTLER	✓	✓	✓	✓	✓									✓	✓	✓	✓	✓	✓	✓	✓	✓									
A. LONG	✓	✓	✓	✓	✓			✓	✓	✓	✓	✓																	✓	✓	
T. MAHER	✓	✓	✓	✓	✓				R	B	✓	✓			R	✓		✓									✓	✓	✓	✓	
S. MATTHEWS	✓	✓	✓	✓	✓			✓	✓		✓	✓														✓	✓	✓	✓	✓	
A. MICKLEBURGH	B	B	✓	B	B									✓	B	✓	B	✓	✓			✓				✓		B		✓	
A. NEAL	✓	B	✓	B	✓						A			B	B	✓	B	✓	✓	B	✓	B									
A. NEWTON	✓	✓		✓	✓			✓	✓	✓	✓	✓																			
R. SANGSTER	✓		✓	✓	✓									✓	✓	✓	✓	✓	✓		✓										
M. SHAW	✓	✓			✓									✓	✓	✓	✓	✓	✓								A				
C. SMITH	✓	✓	✓	✓	✓				✓		✓	✓		✓	✓	✓	✓	✓	✓	✓	✓	✓				✓				✓	
M. SMITH	✓	✓	B		✓									B	✓	✓	✓	✓	B	B	✓	B									
K. YABSLEY	✓	✓	✓	✓	✓			✓	✓	✓	✓	✓																			





<b>K. YABSLEY</b>																																		
-------------------	--	--	--	--	--	--	--	--	--	--	--	--	--	--	--	--	--	--	--	--	--	--	--	--	--	--	--	--	--	--	--	--	--	--

**R = Representing Town Council**

**B = Attending Borough Meeting**

**A = In Attendance**

**hatched = Held in Person**  
**crossed = Cancelled**

**shaded cell denotes non-representation on Committees**



## December 2022 Barclaycard

ORDERS FOR PAYMENT - BY BARCLAYCARD

Number	Supplier	Purchase Description	Amount
5511	Marks & Spencer	Mayors Lunch Food Sandwich Platters	£95.00
5512	Sainsburys	Mayors Lunch Food Drinks etc	£136.26
5513	Amazon	MELNR Emerg. Plan Head Torches/Torches Batteries (CIL)	£303.53
5514	Zoom	Video Communications Dec 22	£14.39
5515	Asda	Mayors Lunch Items	£39.35
5516	Sainsburys	Mayors Lunch Items	£14.30
5517	Amazon	Face Masks packs 2x50	£4.98
5518	Asda	Mayors Lunch Items	£22.38
5519	Royal Mail	Stamps	£99.00
5520	Sainsburys	Mayors Lunch Items	£74.85
5521	Asda	Mayors Lunch Items	£17.19
5522	Currys	RLCHub Kettles x 2	£109.98

**Total Barclaycard    £931.21**

Date Prepared: 12th January 2023

**ORDERS FOR PAYMENT - BY DIRECT DEBIT**

December 2022

<b>Number</b>	<b>Supplier</b>	<b>Purchase Description</b>	<b>Amount</b>
5523	Allstar Business Solutions	Fuel 21/11 YK60UUJ	£100.05
5524	Allstar Business Solutions	Fuel 9/11 MX19WFV	£92.31
5525	Allstar Business Solutions	Fuel 24/25/29 Nov YK60UUJ,YS06BSO,EN65HDF	£231.39
5526	BT	SJP Broadband Qtr to 28/2/23	£176.29
5527	Castle Water	Water Allot 6 months to 31/3/23	£890.88
5528	Castle Water	Water Cem 6 Mths to 31/3/23	£148.94
5529	Castle Water	Water IC Dec DD on account	£108.50
5530	Focus Group	SD & RH Telephone line rental Dec and calls Oct 22	£172.31
5531	O2	Mobile phones Nov 22	£178.87
5532	Opayo	Credit Card terminal rental Dec 22	£22.80
5533	Regent Gas Ltd	RH Gas Nov 22	£206.87
5534	Regent Gas Ltd	RLCC Gas Nov 22	£76.85
5535	Regent Gas Ltd	SJP Gas Nov 22	£196.13
5536	Regent Gas Ltd	MPCC Gas Nov 22	£1,137.71
5537	Southern Electric	RLCC Oct 22	£168.47
5538	Southern Electric	St Light Nov 22 Dusk to Dawn Electricity	£601.48
5539	Southern Electric	St Light Nov 22 Continuous energy Electricity	£49.85
5540	Southern Electric	MPCC Electricity Oct 22	£262.23
5541	Southern Electric	IC Electricity Oct 22	£118.76
5542	Southern Electric	Tractor Shed Electricity Oct 22	£20.43
5543	Southern Electric	SJP Electricity Oct 22	£166.06
5544	Virgin Media	RH Broadband Dec 22	£62.40
5545	Waterlogic	SJP Water Cooler Nov 22	£38.94
5546	Waterlogic	RH Water Cooler Nov 22	£77.88
5547	Wokingham B.C.	RLCC Rates Dec 22	£469.00
5548	Wokingham B.C.	MPCC Rates Dec 22	£217.00
5549	Wokingham B.C.	RH Rates Dec 22	£1,422.00
		<b>Total Direct Debits</b>	<b>£7,414.40</b>

Date Prepared: 17th January 23



**IMPREST ACCOUNT - Reimbursement Vouchers 758 - 760**  
Vouchers between 12th January and 16th January 2023

<b>Number</b>	<b>Details</b>	<b>Amount</b>
758	Damage Deposit Return FC	£50.00
759	Damage Deposit Return RK	£50.00
760	Damage Deposit Return CK	£50.00
	<b>Total Payments</b>	<b>£150.00</b>